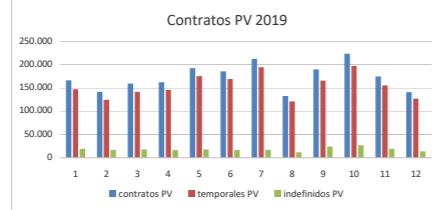
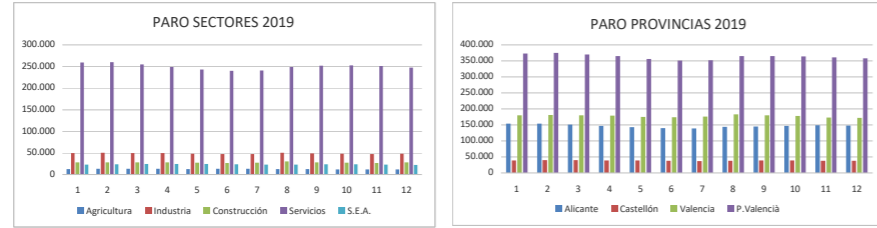


PARO REGISTRADO 2019

	ENERO '19	FEBRERO '19	MARZO '19	ABRIL '19	MAIG '19	JUNY '19	Jul-19	ago-19	sep-19	OCTUBRE '19	NOVIEMBRE '19	dic-19	TOTAL
Agricultura	12.960	13.388	13.589	13.358	12.864	13.197	13.427	12.912	12.226	11.955	11.725	11.680	
Industria	49.984	50.225	49.943	49.788	48.503	47.572	47.181	50.123	49.058	48.418	47.138	47.946	
Construcción	28.430	28.108	28.020	28.126	27.324	26.931	27.669	30.031	28.305	27.581	26.883	28.138	
Servicios	258.941	259.809	254.558	249.087	243.311	239.721	240.517	249.134	251.756	252.907	251.478	247.291	
S.E.A.	23.185	23.867	24.285	24.782	24.395	23.909	23.175	22.862	23.511	23.453	23.283	22.509	
Alicante	154.391	153.942	151.046	147.269	143.023	139.731	139.236	144.275	145.207	147.276	148.954	148.073	
Castellón	38.953	39.993	39.669	39.182	38.630	37.729	37.142	37.949	39.384	39.175	38.499	37.590	
Valencia	180.156	181.462	179.680	178.690	174.744	173.870	175.591	182.838	180.265	177.863	173.054	171.901	
Hombres	150.610	150.516	147.502	145.305	140.706	138.040	139.248	147.370	146.556	146.206	144.900	146.103	
Mujeres	222.890	224.881	222.893	219.836	215.691	213.290	212.721	217.692	218.300	218.108	215.607	211.461	
Menores 25 años	27.840	29.296	29.033	28.473	27.749	26.000	25.163	26.883	29.562	29.589	29.003	27.426	
Extranjeros	57.557	58.292	57.193	55.568	53.657	52.677	52.279	52.588	53.877	54.752	55.439	55.139	
P.Valenciá	373.500	375.397	370.395	365.141	356.397	351.330	351.969	365.062	364.856	364.314	360.507	357.564	
contratos PV	166.029	141.289	169.092	162.293	192.567	185.685	212.202	132.519	189.674	223.418	174.426	140.896	2.080.090
temporales PV	147.106	124.247	141.494	145.695	174.869	169.049	194.694	120.655	165.856	196.850	155.430	127.021	
indefinidos PV	18.923	17.042	17.598	16.598	17.698	16.636	17.508	11.864	23.818	26.568	18.996	13.875	
%temporales													



PARO REGISTRADO 2020

	ene-20	feb-20	mar-20	abr-20	may-20	jun-20	jul-20	ago-20	sep-20	oct-20	nov-20	dic-20	TOTAL
Agricultura	12.932	13.015	13.297	13.798	14.247	16.291	16.754	16.193	15.459	14.801	14.627	14.971	
Industria	48.084	47.709	52.701	58.134	57.564	56.677	54.762	55.977	54.706	53.853	53.052	53.965	
Construcción	27.554	27.100	33.279	36.774	34.318	33.399	32.853	34.660	33.697	32.876	32.941	33.916	
Servicios	256.357	256.085	279.813	306.062	307.893	309.153	296.719	299.332	298.370	296.908	297.816	299.622	
S.E.A.	21.635	22.353	22.737	25.174	26.495	41.276	33.926	34.546	35.132	35.093	35.235	35.227	
Alicante	151.395	150.327	164.840	180.122	179.797	185.578	176.284	178.408	179.045	181.535	184.618	186.109	
Castellón	38.952	39.432	42.680	46.611	47.218	48.965	45.371	45.778	45.343	43.926	43.215	43.194	
Valencia	176.215	176.503	194.379	213.209	213.502	222.253	213.359	216.522	212.976	208.070	205.838	208.398	
Hombres	148.147	147.010	167.085	188.003	185.500	192.121	180.328	183.283	182.586	180.334	180.827	183.819	
Mujeres	218.415	219.252	234.742	251.939	255.017	264.675	254.686	257.425	254.778	253.197	252.844	253.882	
Menores 25 años	27.510	28.650	31.879	37.630	38.021	51.344	40.501	41.206	42.963	43.156	43.523	43.294	
Extranjeros	57.546	57.768	63.457	71.363	72.104	75.156	73.147	73.532	74.794	74.479	75.554	76.740	
P.Valenciá	366.562	366.262	401.827	439.942	440.517	456.796	435.014	440.708	437.364	433.531	433.671	437.701	1.557.224
contratos PV	157.946	151.123	121.927	61.881	75.429	102.075	152.740	102.269	159.753	168.472	159.578	144.031	
temporales PV	139.913	132.994	106.310	55.559	67.385	90.812	138.902	93.367	142.398	149.552	144.057	131.762	
indefinidos PV	18.033	18.129	15.617	6.322	8.044	11.263	13.838	8.902	17.355	18.920	15.071	12.269	
%temporales	88,50%	88,00%	87,10%	89,70%	89,30%	88,90%	90,90%	91,20%	89,10%	88,70%	90,20%	91,50%	

